

LOCATION

Paul's AeroPlane Factory
AirVenture Grounds, North End of Camp Scholler
Oshkosh, WI 54902

[Google Map Reference - http://tinyurl.com/pjizv7b](http://tinyurl.com/pjizv7b)

SPECIAL PASS IS REQUIRED TO ENTER - COMPLETE INFORMATION WILL BE SENT TO REGISTERED ATTENDEES ONE WEEK PRIOR TO COURSE DATE

COURSE PRESENTED AT THIS SESSION

Van's RV Assembly

SCHEDULE

Check In and Registration is Monday morning July 22nd starting at 7:30am.

The course is presented on Monday from 8-5 with lunch break, and continues on Tuesday 8-3pm with lunch break.

TOOLS, MATERIALS AND SUPPLIES

All tools, materials and supplies necessary for the course are included in your workshop registration. We recommend wearing comfortable work clothing .

TRANSPORTATION, LODGING AND MEALS

Transportation, Lodging and Meals are not included in the course fee. We recommend using one of the travel sites like Expedia or Kayak to find the best rates at nearby hotels for lodging.

CANCELLATIONS

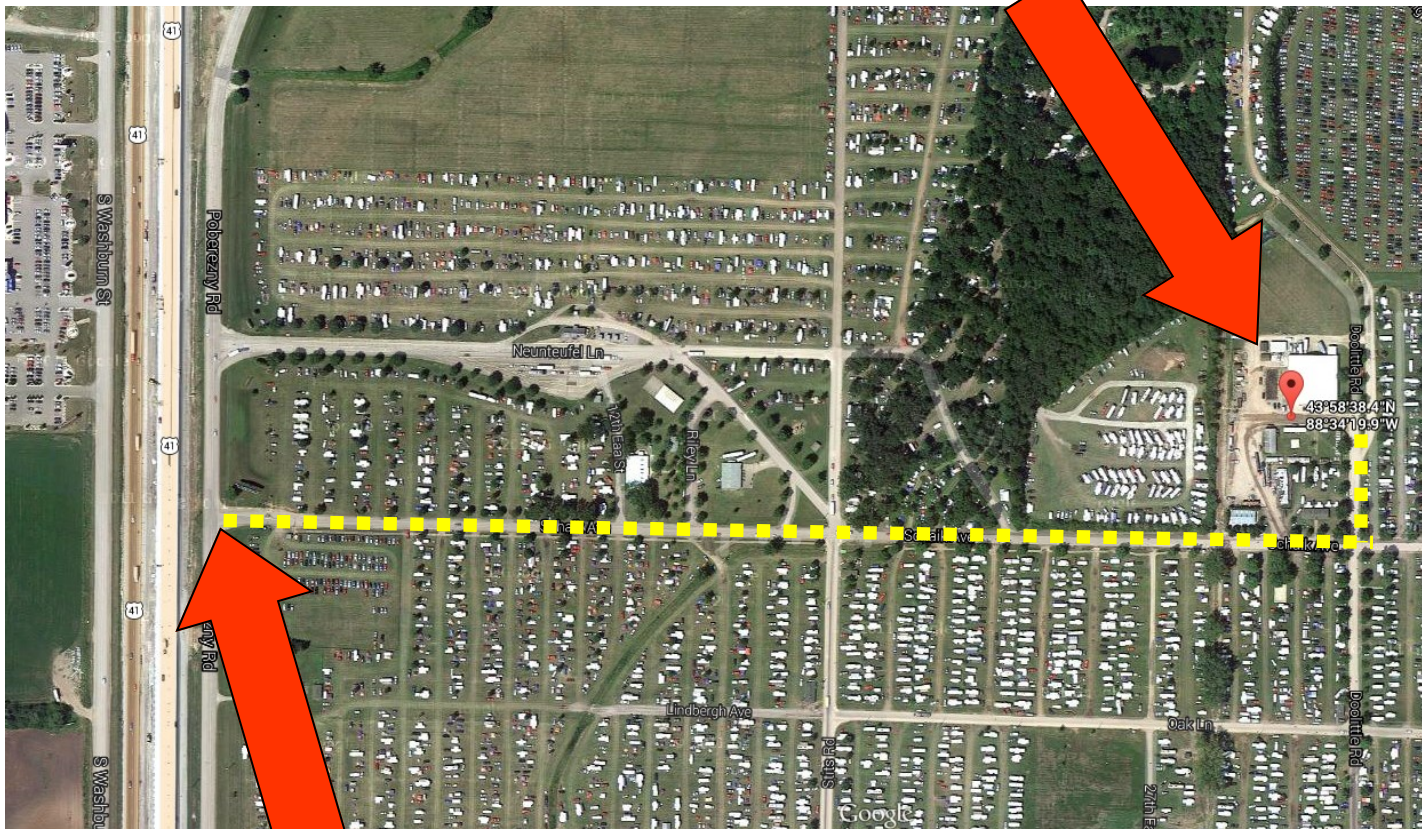
SportAir Workshops are specialized courses with limited attendance to enhance your learning experience. A cancellation fee will be imposed if you are not able to attend. No cancellation fee is charged if you must cancel seven calendar days or more prior to a workshop. Within seven calendar days of the workshop a \$100 cancellation fee will be assessed. A "no show" will not be entitled to a refund.

ADDITIONAL INFORMATION

If you have any questions, need additional information, or have special needs, please contact Mark Forss, Workshop Program Manager at 800-967-5746 or email Mark at mforss@eaa.org

Map to Workshop Location On AirVenture Grounds

Workshop Location at "Paul's
AeroPlane Factory"



Enter Here

Directions

Note: SPECIAL PASS required to enter AirVenture Grounds. All registered workshop attendees will be sent detailed information one week prior to the workshop.

This workshop is located at "Paul's AeroPlane Factory" which is on the north side of the AirVenture Camping area. Enter the West Gate Off of Poberenzy Road. This is Schaick Avenue. Travel east to Doolittle Road. Turn left (north) on Doolittle Road (near Fly In Theater) and you will see the large Red workshop building. The AeroPlane Factory is located on the west side of the building.