

**LOCATION**

Paul's AeroPlane Factory  
AirVenture Grounds, North End of Camp Scholler  
Oshkosh, WI 54902

[Google Map Reference - http://tinyurl.com/pjizv7b](http://tinyurl.com/pjizv7b)

**SPECIAL PASS IS REQUIRED TO ENTER - COMPLETE INFORMATION WILL BE SENT TO REGISTERED ATTENDEES ONE WEEK PRIOR TO COURSE DATE**

**COURSE PRESENTED AT THIS SESSION**

TIG Welding

**SCHEDULE**

Check In and Registration is Wednesday morning starting at 7:30am

The course is presented on Wednesday from 8-5 with lunch break, and continues on Thursday 8-4:30pm with lunch break.

**TOOLS, MATERIALS AND SUPPLIES**

All tools, materials and supplies necessary for the course are included in your workshop registration. We recommend wearing comfortable work clothing . See additional special notes contained on page 2 of this info sheet.

**TRANSPORTATION, MEALS, LODGING**

Transportation, meals and lodging are not included as part of the workshop program and are the responsibility of the attendee. We do not have any specific recommendations for lodging locations and have found the use of websites like Expedia, Kayak or Google Maps, etc. are the best choice to find lodging options at the best price for the workshop location

**CANCELLATIONS**

SportAir Workshops are specialized courses with limited attendance to enhance your learning experience. A cancellation fee will be imposed if you are not able to attend. No cancellation fee is charged if you must cancel seven calendar days or more prior to a workshop. Within seven calendar days of the workshop a \$100 cancellation fee will be assessed. A "no show" will not be entitled to a refund.

**ADDITIONAL INFORMATION**

If you have any questions, need additional information, or have special needs, please contact Mark Forss, Workshop Program Manager at 800-967-5746 or email Mark at [mforss@eaa.org](mailto:mforss@eaa.org)

## **IMPORTANT SPECIAL INFORMATION ABOUT THIS TIG WELDING WORKSHOP**

### **FACILITIES**

The workshop is held in a classroom and workshop area. Be prepared to get hands on and dirty in the workshop! There may be extremes of temperature from cool to hot - be prepared with adequate clothing that you don't mind getting dirty.

### **VISION**

The TIG Instructors suggest that if you wear glasses with bifocals that you **purchase a pair of inexpensive reading glasses** to use during the TIG course. They find that many students with bifocals have problems focusing due to the small area of some bifocals and the resulting "split" image.

### **SAFETY- PACEMAKERS**

Pacemakers are devices which are implanted in cardiac patients to ensure proper heart rhythm. Since these devices are electrical in operation, their ability to function can be affected by strong electromagnetic fields.

### **WELDING AND ELECTROMAGNETIC FIELDS**

Electric arc welding and cutting processes produce intense electric and magnetic (electromagnetic) fields. Persons with a pacemaker should not go near welding or cutting operations until they have consulted their doctor and obtained information from the manufacturer of the device.

### **STEPS TO REDUCE EXPOSURE**

Pacemaker wearers should observe the following precautions:

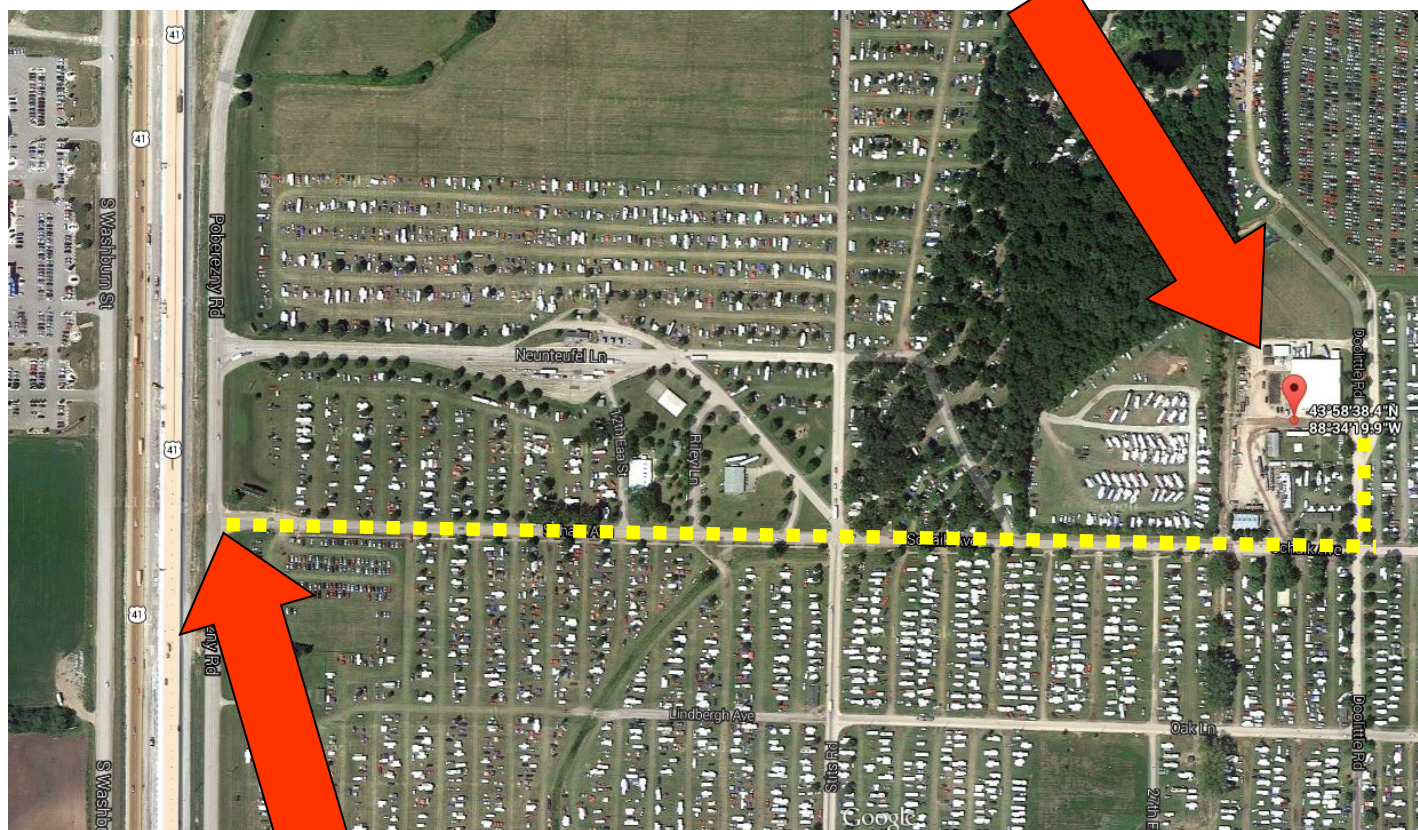
- Do not use current settings higher than necessary.
- Keep the weld cables close together by twisting or taping.
- Connect work clamp to workpiece as close to the weld.
- Arrange cables to one side and away from the operator.
- Keep welding power source and cables far away.
- Do not weld with rapidly repeated short spurts—wait 10 seconds between each weld.
- If you feel sick, stop welding and get medical attention.
- Do not work alone.

### **TALK TO THE DOCTOR**

If you are getting a pacemaker and will be working with or around welding, talk with your doctor. Inform him of your occupation. Discuss your work clearly with him. Pacemakers differ, and your doctor can select one that is less likely to be affected by interference.

## Map to TIG Workshop Location On AirVenture Grounds

Workshop Location at "Paul's  
AeroPlane Factory"



Enter Here

### Directions

**Note: SPECIAL PASS required to enter AirVenture Grounds. All registered workshop attendees will be sent detailed information one week prior to the workshop.**

This workshop is located at "Paul's AeroPlane Factory" which is on the north side of the AirVenture Camping area. Enter the **West Gate** Off of Poberenzy Road. This is Schaick Avenue. Travel east to Doolittle Road. Turn left (north) on Doolittle and you will see the large Red workshop building. The AeroPlane Factory is located on the west side of the building.