



Events

at EAA



Welcome to EAA!

On behalf of our events team, thank you for considering EAA as your event venue! We are excited at the possibility of working with you to create your event. With more than 1,600 acres and 26 venues to choose from, we are sure to show you a space that will make your vision come to life. From intimate wedding ceremonies and formal corporate meetings to outdoor runs and exhibitions, EAA can cater to any type of event. Our unique atmosphere is sure to offer a one-of-a-kind experience for your guests.

Starting with initial conversations regarding your specific event needs, EAA is dedicated to providing you with a premium experience while providing hands-on attention throughout the process. We take pride in making each event stand out and work with our clients to ensure every detail is fulfilled. Our turnkey approach allows us to create centerpieces, coordinate your audiovisual needs, and work with vendors ranging from musicians and production companies to florists and photographers. Plus, with a list of roughly 12 preferred caterers, you will be sure to find delicious cuisine tailored to meet your event needs.

Please contact our dedicated events team for pricing and with any questions you may have, or to move forward with the contract and planning process. Our goal is to ease your workload so, come event day, you can enjoy the time with your guests. We look forward to helping you create an event beyond your expectations!

Sincerely,
EAA Events Team

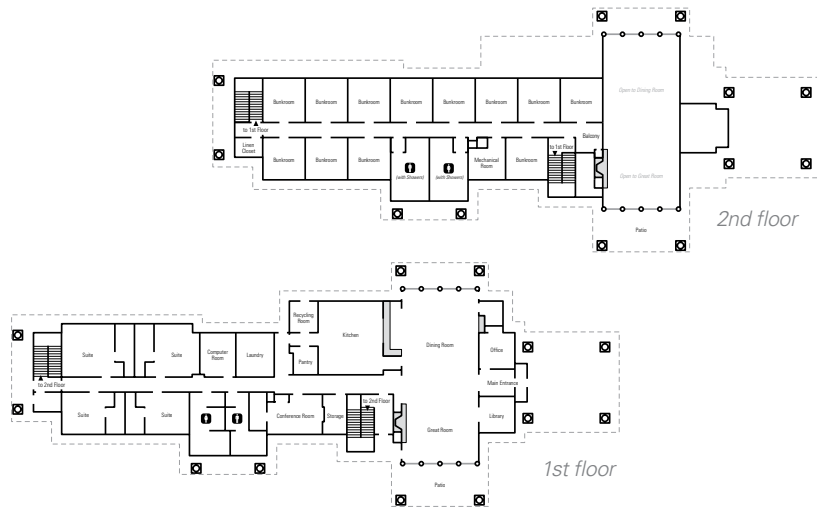


EAA Air Academy Lodge and Staff Lodge

Make this venue your home away from home! The Air Academy Lodge is a great place for corporate retreats, family reunions, weddings, baby showers, or any type of party that requires a relaxed, homey feeling. Complete with 16 guest rooms (12 bunkrooms and 4 suites), a great room, kitchen (for caterer use only), dining room, classrooms, conference rooms, library, fireplace, pool, foosball and pingpong tables, and outdoor facilities, including an outdoor gazebo with fire pit. The rooms noted below make for great meeting and activity areas within the Air Academy Lodge.

Please inquire about meal plans. Overnight packages available to aviation organizations only.

Room	Seating Capacity	Dimensions
Great/Dining Room	54	50,000 sq. ft.
Conference/Board Room	8	
Distance Learning Lab	18 (classroom)	



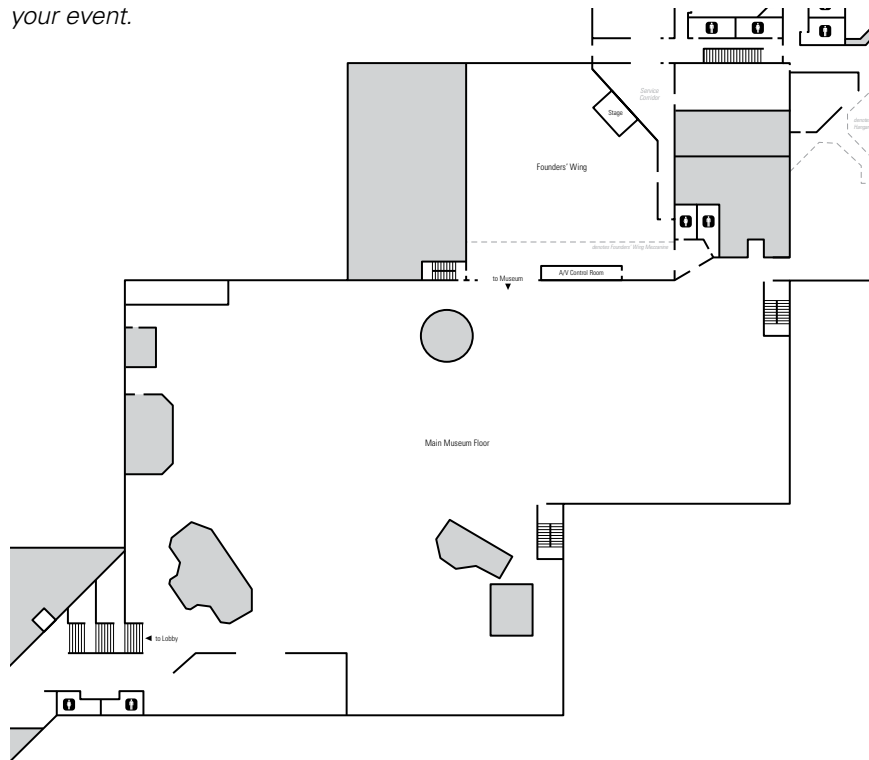
EAA Aviation Museum

This space is one of the most remarkable venues available anywhere for meetings, receptions, or gatherings. Nearly 100 aircraft are displayed throughout the museum, offering much more than the standard event atmosphere for your group. There are numerous galleries within the EAA Aviation Museum that provide outstanding backdrops for your event. The price includes access to all exhibit areas in the EAA Aviation Museum.

Dimensions

50,000 sq. ft.

See your event coordinator to discuss capacity quantities for your event.



EAA Aviation Museum Lobby

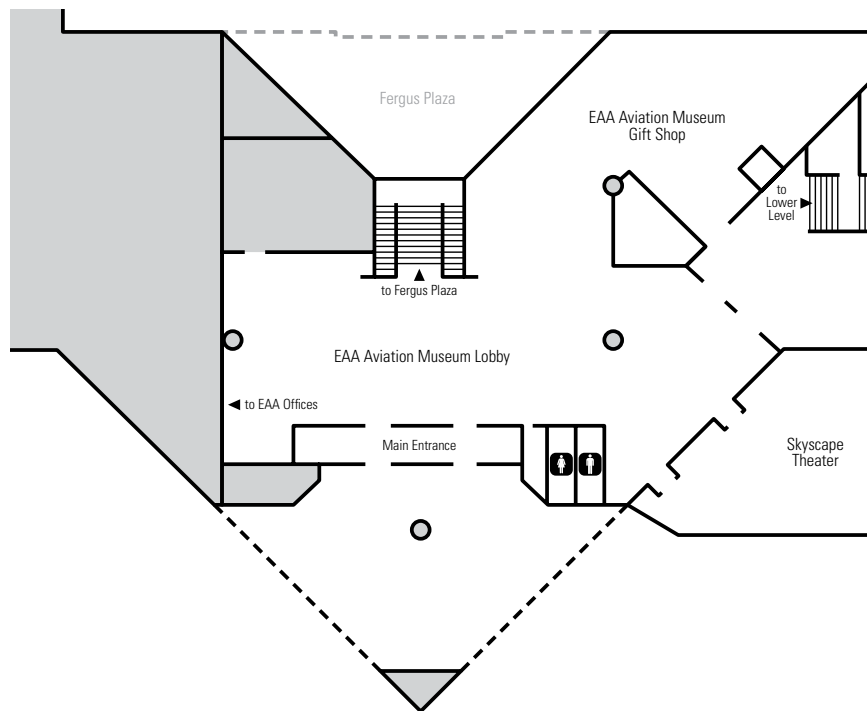
The magnificent “Tower of Aviation” welcomes your guests to the EAA Aviation Center, creating a striking setting for any gathering. The lobby is the perfect place for meeting registration and greeting or for hors d’oeuvres and cocktail receptions.

Dimensions

55' 2" W x 124' 4" L (1,500 sq. ft.)

Seating Capacity

Rounds: 100 Theater: 100



Batten Board Room

Located on the lower level of the EAA Aviation Center, the Batten Board Room offers privacy and comfort in an exceptional meeting facility. It also has full technology capability to accommodate your needs. If desired, you can take the edge off a winter chill or add the right casual touch with the in-room fieldstone fireplace. The Batten Board Room overlooks the Leeward Plaza and Pioneer Airport and is adjacent to the Fergus Plaza.

Dimensions

26' W x 40' 5" L (873 sq. ft.)

Seating Capacity

Conference: 26

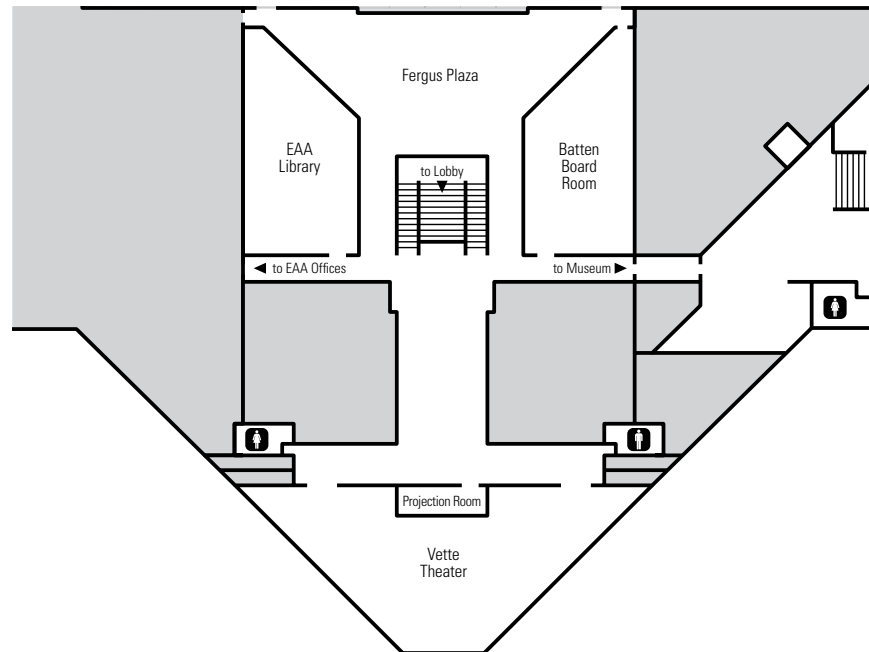
AV Equipment Included*

WUXGA ceiling-mounted projector (1)

4.25' H x 7.5' W roll-down screen (1)

55" mounted HDTV (1)

PC laptop (1)



**Please see your event coordinator for additional audiovisual details.*

Computer Lab

If you need to get away from the home office to conduct important computer or technology training for a small group, this room is the perfect place. The Computer Lab has the technology you need for hands-on instruction, with an off-the-main-track setting that supplies the quiet training environment you're looking for.

Seating Capacity

24 computer stations

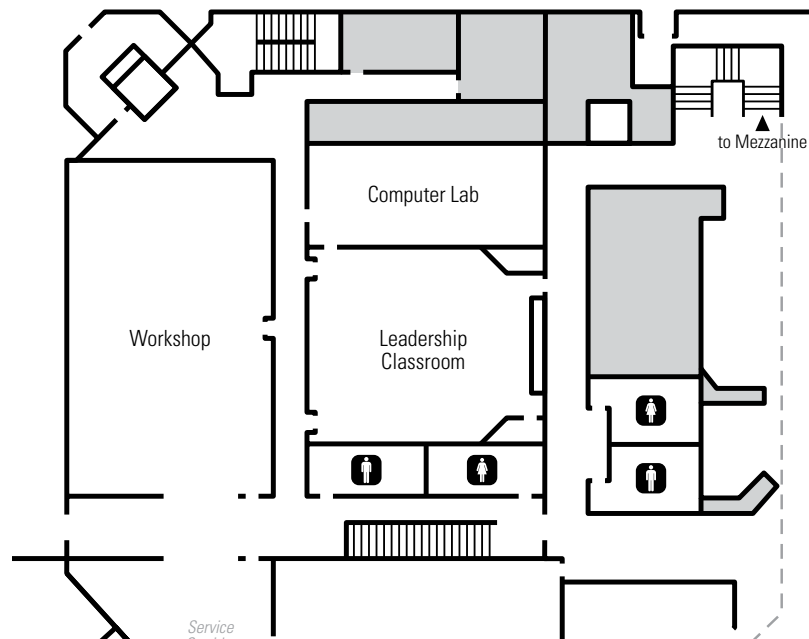
AV Equipment Included*

XGA ceiling-mounted projector (1)

4.75' H x 6.5' W roll-down screen (1)

In-house PA system

PC laptop (1)



*Please see your event coordinator for additional audiovisual details.

Eagle Hangar

Our largest, and perhaps the most visually impressive space within the EAA Aviation Museum, the Eagle Hangar houses restored military aircraft to create an unmatched backdrop of nostalgia. With history, class, and space for any aspect you need at your event, from place cards and gift tables to bars to a photo booth, this is the perfect venue for all types of events ranging from weddings to corporate meetings.

Dimensions

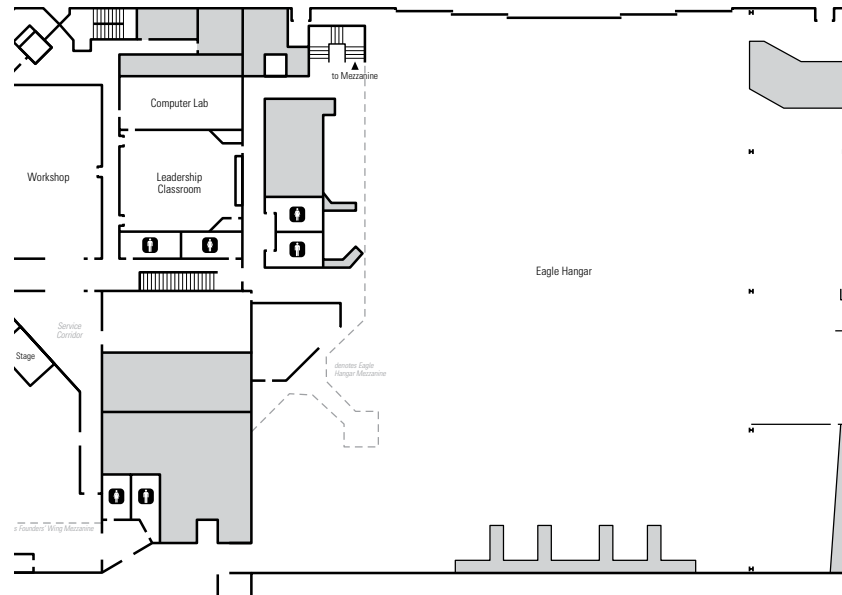
186' W x 186' 10" L (34,596 sq. ft.)

Seating Capacity*

Theater: 600

Banquet: 300

Classroom: 300



*Capacity based on set-up of area. Please contact your event coordinator to discuss floor plan options.

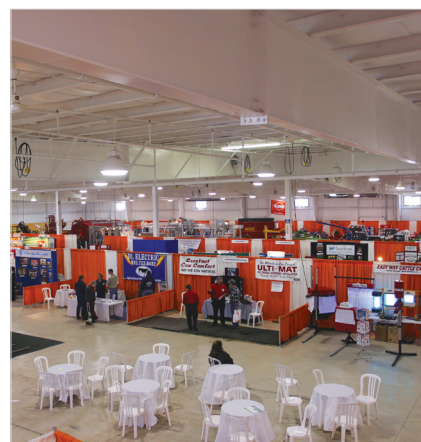
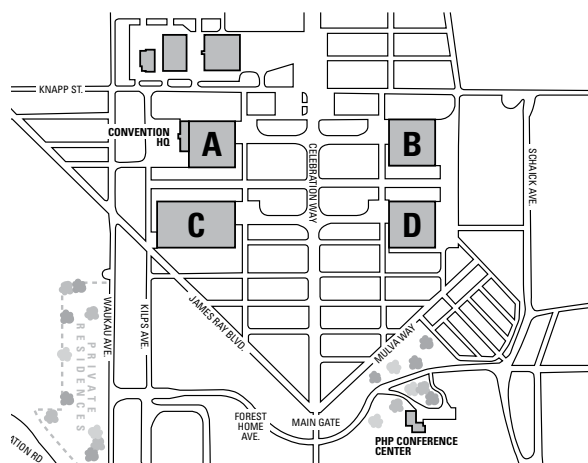
Exhibit Hangars

There are no better convention/exhibit facilities in the area than these four hangars located on the EAA AirVenture grounds. Each summer, the buildings welcome hundreds of aviation exhibitors from around the world and supply their logistical needs. Located close enough together to allow for an easy walk to any of them if space in multiple hangars is needed, the layout is perfect for organizing your event, convention, festival, or exposition show needs, with plenty of adjacent parking room and even an aircraft taxiway if needed. Outdoor exhibit space and camping facilities are available upon request.

Dimensions

Hangar A (heat & electricity): 200' W x 200' L (40,000 sq. ft.)
 Hangar B (restrooms, heat, & electricity): 200' W x 200' L (40,000 sq. ft.)
 Hangar C (restrooms, heat, & electricity): 200' W x 290' L (58,000 sq. ft.)
 Hangar D (heat & electricity): 200' W x 200' L (40,000 sq. ft.)

Seating Capacity	Banquet	Rounds	Theater	Classroom
Hangar A:	2,500	2,500	4,000	500
Hangar B:	2,500	2,500	4,000	500
Hangar C:	4,000	3,500	6,450	500
Hangar D:	2,500	2,500	4,000	500



Fergus Chapel

A quaint, old-time chapel located next to a quiet pond – the perfect backdrop for beautiful pictures – the Fergus Chapel provides an intimate setting for weddings, baptisms, or memorial services. The chapel is located between the EAA Nature Center and Pioneer Airport and includes easy, separate access off Waukau Avenue.

Dimensions

27' W x 39' L (1,026 sq. ft.)

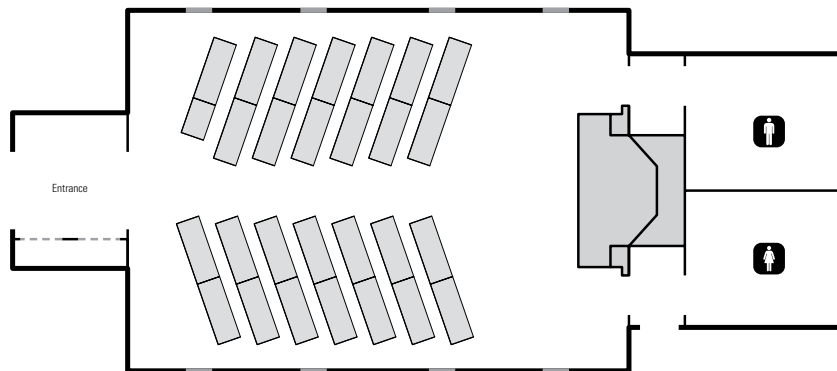
Seating Capacity

Theater: 80

AV Equipment Included*

Podium with wired microphone (1)

Fergus Chapel must be booked in conjunction with another rental space.



**Please see your event coordinator for additional audiovisual details.*

Fergus Plaza

A two-story panoramic view greets guests to the Fergus Plaza, conveniently located on the lower level of the EAA Aviation Museum, and just inside the main entrance. The view looks out on Leeward Plaza and EAA's picturesque Pioneer Airport, a remarkable re-creation of a 1930s aerodrome. Ideal for receptions, private luncheons, and after-hours events, the Fergus Plaza is also conveniently located adjacent to a small catering kitchen.

Dimensions

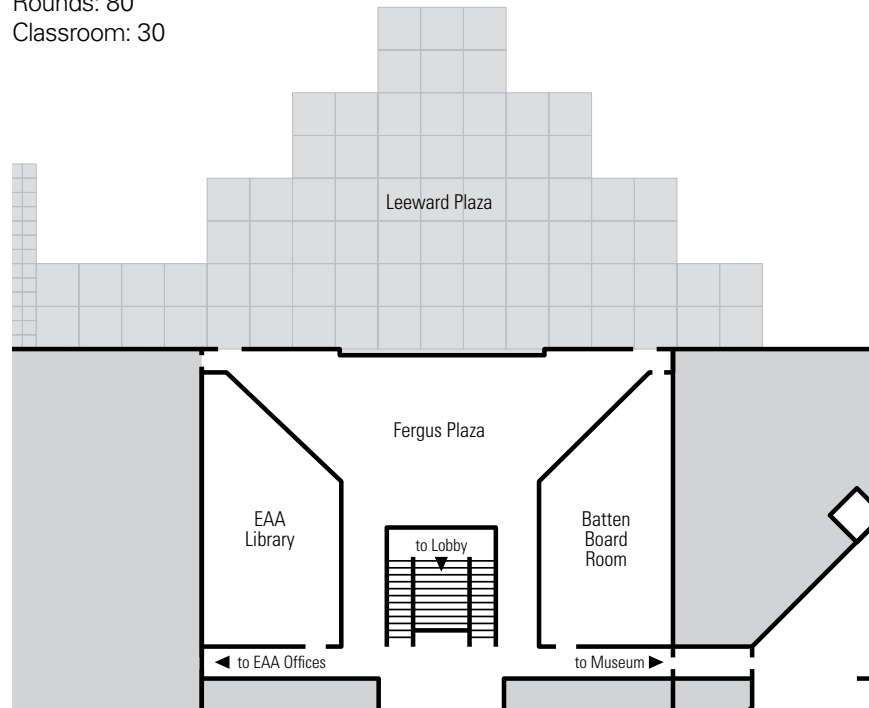
74' W x 32' L (1,796 sq. ft.)

Seating Capacity

Theater: 150

Rounds: 80

Classroom: 30



Founders' Wing

Dedicated to preserving EAA's heritage and culture for future generations, the Founders' Wing highlights EAA's significant accomplishments throughout its history. The main floor can accommodate up to 400, surrounding your guests with the history of EAA's annual convention, AirVenture, since 1953. An intimate atmosphere awaits on the mezzanine level, where your guests can enjoy viewing the Founders' Library and the EAA Legacy Wall while overlooking suspended aircraft and aviation artwork.

Dimensions

77' 10" W x 95' L (7,400 sq. ft.)

Seating Capacity

Theater: 400

Rounds: 240

Classroom: 100

AV Equipment Included*

HD ceiling-mounted projector (1)

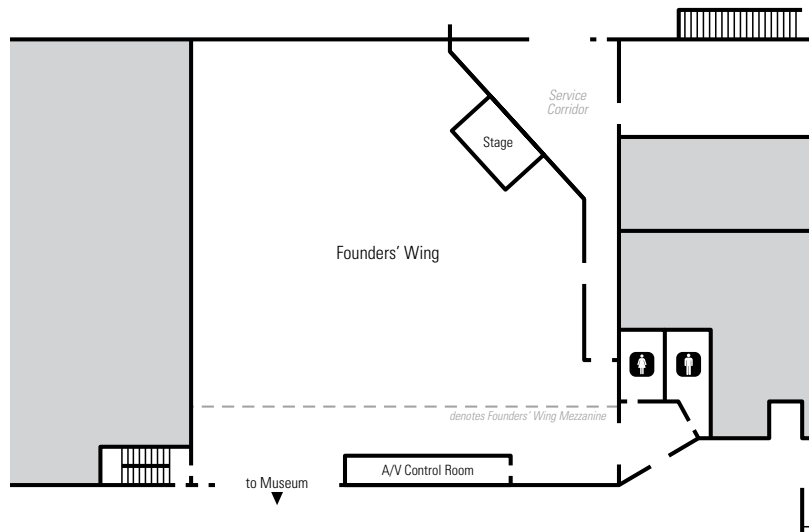
11.25' H x 20' W roll-down screen (1)

In-house PA system

Wireless microphones (2)

Lavalier microphones (2)

PC laptop (1)



*Please see your event coordinator for additional audiovisual details.

Leadership Classroom

This educational space for classroom presentations, meetings, or information sessions includes internet connections and updated technology. The classroom is also an outstanding staging area or greenroom for larger events that take place in the Eagle Hangar or other EAA Aviation Museum areas.

Dimensions

35' 9" W x 36' 2" L (1,326 sq. ft.)

Seating Capacity

Hollow Square: 40

Classroom: 34

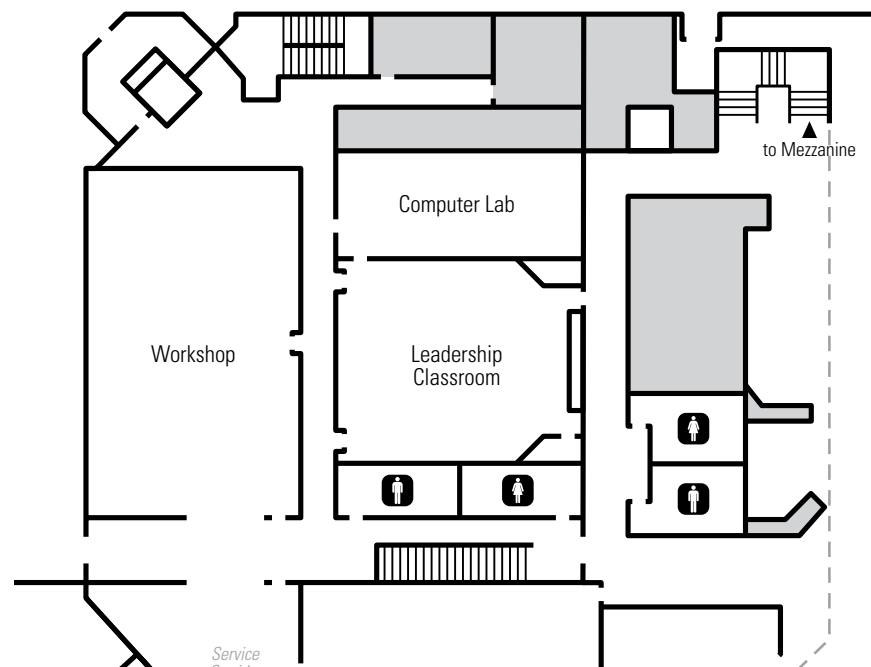
AV Equipment Included*

XGA ceiling-mounted projector (1)

4.75' H x 6.5' W roll-down screen (1)

In-house PA system

PC laptop (1)



**Please see your event coordinator for additional audiovisual details.*

Leeward Plaza

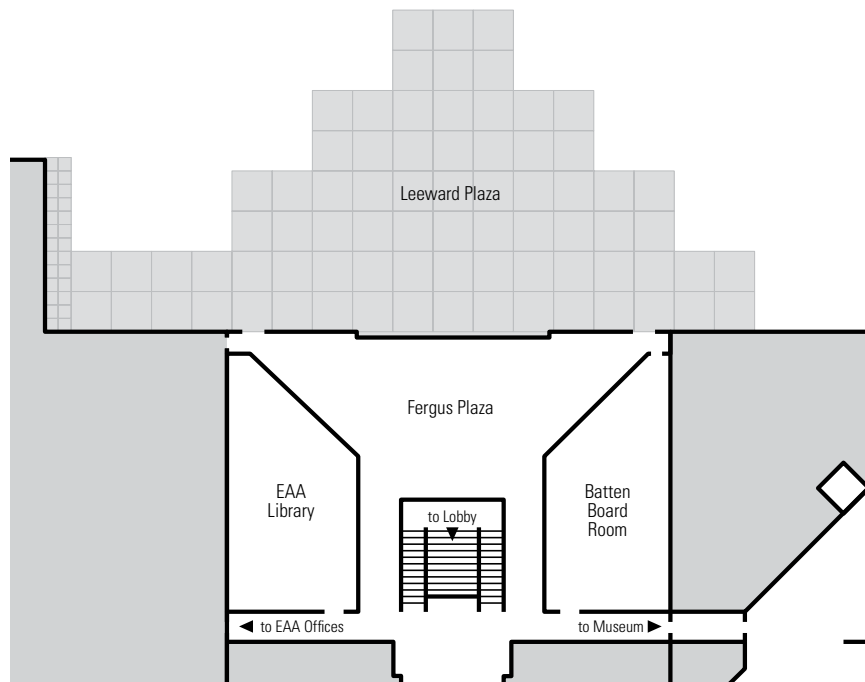
Located just outside the doors of the Fergus Plaza, the Leeward Plaza is the perfect choice for an outdoor wedding ceremony or casual reception. Not only does the location have all the amenities of the adjacent museum, it also features EAA's Pioneer Airport, providing a stunning aviation backdrop. Convenient drive-up facilities for caterers and other logistics make this an easy area to set up and tear down. Includes grass area.

Dimensions

104' W x 64' L (4,480 sq. ft.)

Seating Capacity*

Rounds: 160



**Additional capacity on grass lawn*

Nature Center Pavilion

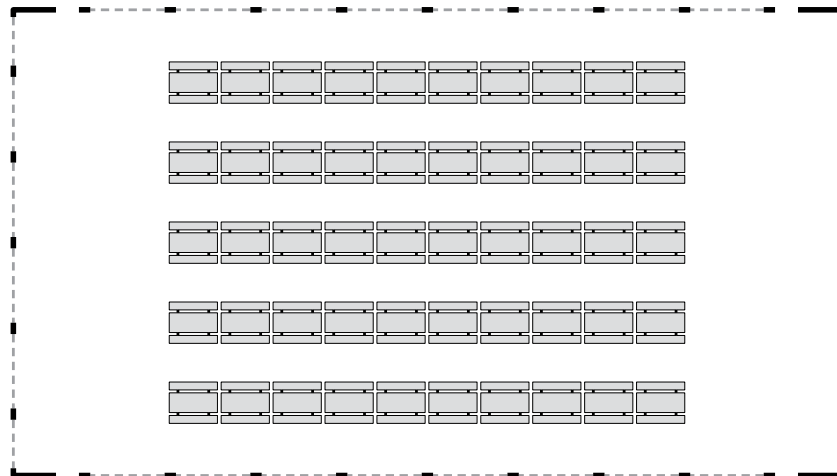
Located east of the EAA Aviation Center in a wooded area, the beautiful pondside Nature Center Pavilion is the perfect setting for your wedding reception, company picnic, or outdoor event. Along with easy Waukau Avenue access, the Nature Center Pavilion features overhead doors that can bring in or keep out the weather. The pavilion is surrounded by an open area for parking or group activities.

Dimensions

60' W x 100' L (6,000 sq. ft.)

Seating Capacity

Picnic Tables: 300



Gray dashed lines represent overhead doors.



Please contact your event coordinator for additional seating styles. Fees may apply.

Nature Center Pond

The Nature Center Pond resembles a beautifully painted canvas and is commonly known as the most scenic spot on the EAA grounds. Located adjacent to EAA's Nature Center Pavilion, this area is a popular location for wedding ceremonies or outdoor tented gatherings. A lush lawn, trees that change with the seasons, a charming arched bridge, and calming waters surround you as you're provided with a sense of serenity. The Nature Center Pond area is just a short drive from the EAA Aviation Center but is also extremely secluded, ensuring privacy for you and your guests.

Equipment (*chairs, tables, audiovisual, etc.*)

Must be provided by one of EAA's approved rental providers.

Seating Capacity:

Theater: 150



*Nature Center Pond must be booked in conjunction with the Nature Center Pavilion.
Talk to your event coordinator regarding seating capacities and for additional details.*

Vette Theater

EAA's state-of-the-art amphitheater can accommodate major video presentations with comfortable theater seating for 116. Each seat also has a slide-away writing surface, making it the ideal setting for meetings that require note-taking. A private stairway entrance can be used to reach the facility.

Food and beverages are not allowed in the Vette Theater.

Dimensions

1,667 sq. ft.

Seating Capacity

Theater: 116

AV Equipment Included*

XGA ceiling-mounted projector (1)

7.5' H x 10' W screen

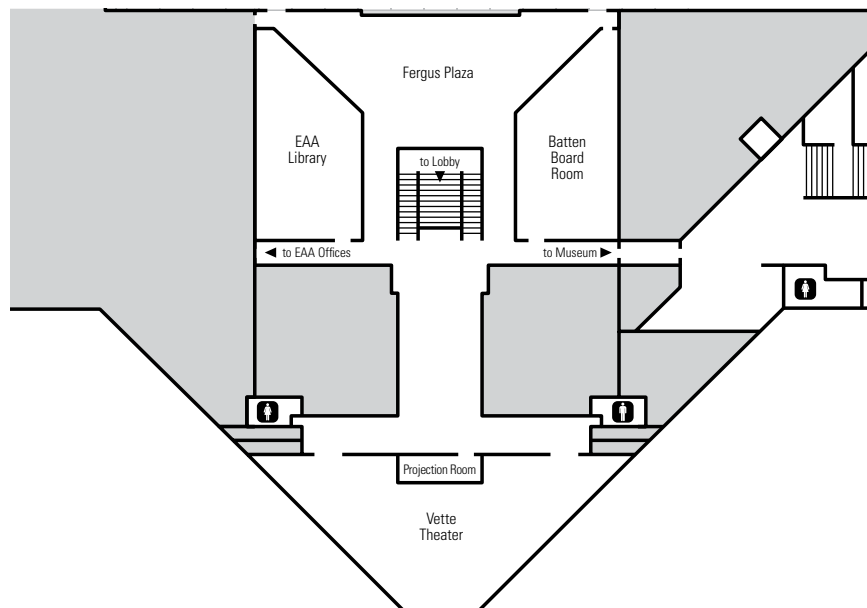
In-house PA system

Podium with one wired microphone (1)

Wireless microphone (1)

Lavalier microphone (1)

PC laptop (1)



**Please see your event coordinator for additional audiovisual details.*

Approved Caterers

Becket's

1 City Center, Oshkosh, WI 54901

Contact: Kris Larson
920-230-3333
kris@becketsrestaurant.com

Best Western Premier Waterfront Hotel and Convention Center

1 North Main Street, Oshkosh, WI 54901

Contact: Christy Marquardt
920-230-6289
cmarquardt@bwoshkosh.com

Chefusion

207 North Broadway, Green Bay, WI 54303

Contact: Robert Phillips
920-432-2300
rphill9959@aol.com

La Sure's

1570 Ripon Lane, Oshkosh, WI 54901

Contact: Talia Stone
920-651-0796
talias@lasures.com

Machine Shed Restaurant

220 N. Fox River Drive, Grand Chute, WI 54913

Contact: Robert Wenzel
920-830-2326
rwenzel@hoari.com

Parker John's BBQ & Pizza

124 Main Street, Menasha, WI 54952

Contact: Jason Schroeder
920-395-1370
CaterPJs@viandhospitality.com

Red's Pizza & Catering

1123 Oregon Street, Oshkosh, WI 54902

Contact: Steve Lawler
920-231-3290
redspizzaandcatering@gmail.com

The Roxy

671 N. Main Street, Oshkosh, WI 54901

Contact: Ryan Wolf
920-379-6522
theroxy@ntd.net

Saz's Catering

5539 West State Street, Milwaukee, WI 53208

Contact: Joe Brueggemann
414-256-8765
joeb@sazs.com

Thunder Bay

N14 W24130 Tower Place, Waukesha, WI 53188

Contact: Jeremy Pust
262-523-4244
jpust@hoari.com

Tysinger Promotions (TPI)

P.O. Box 12588, 601 McCarthy Boulevard,
New Bern, NC 28561

Contact: Wendy Stallings
252-636-0033
wendy@tysingerpromotions.com

Zuppas

1540 South Commercial Street, Neenah, WI 54956

Contact: Penny Myers
920-720-5045
info@zuppas.com



*ALL alcoholic beverage service
must be contracted through EAA.*

Standard Beverages

Guests 21 and older with valid ID are permitted to consume alcohol.

Spirits	Single Price	Double Price
Bacardi Silver	\$5.00	\$7.00
Canadian Club	\$5.00	\$7.00
Captain Morgan	\$5.00	\$7.00
Christian Brothers	\$5.00	\$7.00
Jim Beam	\$5.00	\$7.00
Johnnie Walker Red	\$5.00	\$7.00
Malibu	\$5.00	\$7.00
Sauza Blue Reposada	\$5.00	\$7.00
Smirnoff	\$5.00	\$7.00
Tanqueray	\$5.00	\$7.00

Wine	Price
Silver Gate Cabernet	\$5.00
Silver Gate Chardonnay	\$5.00
Silver Gate Pinot Grigio	\$5.00
Jacob's Creek Moscato	\$5.00

Bubbly Wine (by bottle only)	Price
J. Roget	\$15.00

Beer	Price
Miller Lite	\$4.00
Saint Archer Gold	\$4.00
Capital Amber	\$5.00
Capital Supper Club	\$5.00
Karben4 Fantasy Factory IPA	\$5.00
Leinenkugel's Summer Shandy	\$5.00
Modelo Especial	\$5.00
Truly Wild Berry Seltzer	\$5.00

Barrel Service (half-barrel keg)	Price
Miller Lite	\$275.00
Miller High Life	\$275.00
Coors Light	\$275.00
Capital Amber	\$325.00
Capital Supper Club	\$325.00
Leinenkugel's Summer Shandy	\$325.00
New Glarus Spotted Cow	\$325.00
Special Order*	Consult event coordinator

Soft Drinks	Price
Aquafina Water	\$2.00
Pepsi	\$2.00
Diet Pepsi	\$2.00
Mountain Dew	\$2.00
Diet Mountain Dew	\$2.00
Sierra Mist	\$2.00
Diet Sierra Mist	\$2.00

Please add an 18% service charge and applicable sales tax.
There is a \$100 bartender fee for each bartender required.

Pricing and selections are subject to change.

*Special product available for purchase.
Please contact your event coordinator for details.



Premium Beverages

Guests 21 and older with valid ID are permitted to consume alcohol.

Spirits	Single Price	Double Price
Absolut	\$6.00	\$8.00
Bacardi Silver	\$6.00	\$8.00
Captain Morgan	\$6.00	\$8.00
Crown Royal	\$6.00	\$8.00
Korbel	\$6.00	\$8.00
Maker's Mark	\$6.00	\$8.00
Malibu	\$6.00	\$8.00
Sauza Blue Reposada	\$6.00	\$8.00
Tanqueray 10	\$6.00	\$8.00
The Glenlivet 12	\$6.00	\$8.00

Wine	Price
Louis Martini Cabernet	\$6.00
Athena Chardonnay	\$6.00
Silver Gate Pinot Grigio	\$6.00
Jacob's Creek Moscato	\$6.00

Bubbly Wine (by bottle only)	Price
Chandon Brut	\$35.00

Beer	Price
Miller Lite	\$4.00
Saint Archer Gold	\$4.00
Capital Amber	\$5.00
Capital Supper Club	\$5.00
Karben4 Fantasy Factory IPA	\$5.00
Leinenkugel's Summer Shandy	\$5.00
Modelo Especial	\$5.00
Truly Wild Berry Seltzer	\$5.00

Barrel Service (half-barrel keg)	Price
Miller Lite	\$275.00
Miller High Life	\$275.00
Coors Light	\$275.00
Capital Amber	\$325.00
Capital Supper Club	\$325.00
Leinenkugel's Summer Shandy	\$325.00
New Glarus Spotted Cow	\$325.00
Special Order*	Consult event coordinator

Soft Drinks	Price
Aquafina Water	\$2.00
Pepsi	\$2.00
Diet Pepsi	\$2.00
Mountain Dew	\$2.00
Diet Mountain Dew	\$2.00
Sierra Mist	\$2.00
Diet Sierra Mist	\$2.00

Please add an 18% service charge and applicable sales tax.
There is a \$100 bartender fee for each bartender required.

Pricing and selections are subject to change.

*Special product available for purchase.
Please contact your event coordinator for details.





EAA Events | 3000 Poberezny Road, Oshkosh, WI 54902 | 920-426-6126 | events@eaa.org