



# Chatting

By Leo J. Kohn  
EAA 4

## WITH THE CHAPTERS

### ● RIVERSIDE, CALIF. CHAPTER 1

Daniel W. Fielder, Jr.  
115 S. San Jacinto Ave.  
San Jacinto, Calif.

This, our first chapter, is more on the go at the present time than ever before, generating more and more interest among aviation people, and participating in many events. They participated in the Palm Springs show last fall, and produced a very fine fly-in of their own.

Stealing the thunder from aerobatics going on outside was an educational talk on airfoils by retired designer Claude Flagg, starting with theory dating to the 1700s right up to the present space efforts.

With Phil Cline narrating, Ed Marquart offered a blackboard talk on the art of laying out wing ribs, followed by films on the construction of the T-18 and some of the problems associated with it. Films of local aviation history were presented by Bob Bennet, and also enjoyed were films about Roman Warren, famed cowboy aviator of the 1920s.

Ray Stits demonstrated his Poly-Fiber aircraft covering process, and also drummed up interest in his "Playmate" by offering free rides in it.

Ed Marquart has the fuselage of his two-place biplane finished, and the machine can't be too far away from taking to the air.

### ● RED SKINS (Washington, D.C.) CHAPTER 4

Bruce L. Hutton  
311 Ottawa St., SE.  
Washington, D.C.

Tom Hook, author of the book "Flying Basics", gave the membership a review of the subject matter, and Lt.

Richard Thomas presented films on the Dr. Lippisch ground-effects machine.

The chapter held its annual dinner-dance again at Bolling AFB, and participated not only in the Cherry Blossom parade along with Chapter 186, but also cooperated with that chapter in participating in the National Teen Show by setting up an interesting exhibit.

Bill Smith is just about finished with his Cassutt "Special" . . . it

## EAA CHAPTERS

### SWEET CORN (Mendota, Illinois) CHAPTER 263

Francis E. Fitzgerald, President  
R. R. 1  
Mendota, Ill.

### BREVARD COUNTY, FLORIDA CHAPTER 264

D. C. Skinner, President  
1445 Belford Court, N.  
Merritt Island, Fla.

## PROSPECTIVE CHAPTERS

The following members are anxious to get a chapter started in their area and if you are interested in forming one please contact them.

### CALIFORNIA — Arcata, Blue Lake, Eureka, Scotia

Ronald J. Mize  
206 Del Norte  
Eureka, Calif.

took him only 18 days to build the entire wing! Guy De Lort is showing very good progress on the fuselage of his "Emeraude."

James McCulley has repainted the Wittman "Big X" after having traded the original Heuberger "Sizzler" for it. Jim Backus had his "Fly Baby"

(Continued on next page)

## AIRCRAFT CONSTRUCTION MATERIAL

4130 Chromoly Tubing, round, square and streamlined — Chromoly Steel Sheet and Rod — Bushing Stock — Plywood — Aluminum Sheet — Wheels, Brakes and Tires — POLY-FIBER Covering Process.

WRITE FOR FREE PRICE LIST

**STITS AIRCRAFT CORP.**

BOX 3084E  
RIVERSIDE, CALIFORNIA 92509

## TRANS-OCEANIC TRADING CO.

711 United Fruit Building  
NEW ORLEANS, LA. 70130  
Telephone (504) 522-4578

## AIRCRAFT PLYWOOD

Finnish Birch

Thickness	Size	Price FOB New Orleans sq. ft. sheet
1mm (1/25")	50 x 50	.345 \$ 5.99
1.5 mm (1/16")	50 x 50	.40 6.94
2mm (1/12")	50 x 50	.486 8.43
3mm (1/8")	50 x 50	.585 10.16

ADD: \$2.00 Bdlg. Chg. orders of Less than 5 sheets

DISCOUNT: 5% EAA member; 5% orders of 25 sheets or more

Write for **FREE** current Stock & Price List

price subject to change without notice

## Build this "Sportsman" AMPHIBIAN Now

Double Your Flying Pleasure by Including WATER SPORTS

Winner at 1964 EAA  
International Convention  
Best Design—  
All-Wood Aircraft

Volmer Jensen's original prototype has now flown a distance equal to 3 times around the world. Many hobbyists are currently constructing this aircraft in Africa, Canada, Denmark, England, New Zealand, South America, Switzerland, etc.

Complete blueprints now available for the world's only new two-place pusher amphibian.

**VOLMER AIRCRAFT, Dept. E**  
104 E. Providencia Ave. Burbank, Calif.



(1)  
Send \$2.00  
for literature  
specifications,  
color photo and  
Three-View  
Blueprint

## PLANS FOR ALL-WOOD FLY BABY

FOLDING-WING  
SINGLE-SEATER

WINNER OF 1962  
EAA DESIGN  
CONTEST.  
\$15.00

Simplified step-by-step assembly drawings  
and detailed printed instructions.

**PETER M. BOWERS**  
13826 DES MOINES WAY SO.  
SEATTLE 68, WASH.

(1)



SEND \$1.00  
for literature,  
specifications,  
material costs,  
tooling re-  
quirements,  
large flight  
photo.



**SPECIAL SALE**  
Home Builders & Shop Operators  
Goodie Assortments

1 gal. assorted aircraft bolts, about 25 lbs.	\$10.00
1 gal. assorted aircraft screws, about 27 lbs.	10.00
1 gal. assorted hose & line support clamps	7.50
1 gal. assorted grommets	3.00
1/2 gal. assorted clevis bolts	5.00
1 qt. assorted aircraft washers	5.00
1 qt. assorted cotter keys	4.00
1 qt. assorted anchor nuts	5.00
1 pt. assorted Zerk fittings	3.00
1 qt. assorted Dzus, camlock and shakeproof fastener	5.00

**STIT S AIRCRAFT**  
P. O. Box 3084 Riverside, Calif. 92509

• **READ SPORT ADS** •



**BENSEN GYROCOPTER**  
MOST FUN, LEAST COST — AND  
YOU CAN BUILD IT YOURSELF!

Enjoy the thrill of flying in your own Copter. Thousands built by others like you all over the world, from Alaska to New Zealand. Economical to operate, simple and safe to fly. Weighs about 250 pounds, can lift an additional 300 pounds with ease. Fits into a garage. Build with ordinary hobbyshop tools. Kits available, also construction plans and flying instructions. Get 3-View Drawings, specs, photo for \$3, or of simpler Gyroglider for \$2.

SEND **\$2**  
or  
**\$3** **BENSEN AIRCRAFT CORP., Dept. SA-96**  
Raleigh-Durham Airport, Raleigh, N. C. 27602  
NAME \_\_\_\_\_  
ADDRESS \_\_\_\_\_

**CHATTING . . .**

(Continued from preceding page)

project displayed at the National Teen Show, and the members are building wing ribs for the chapter's all-wood group project.

Keith Thomas has a Fauvel AV-60 under construction and John Flick is about ready to fly his Bannick-Cop-ter.

• **SEATTLE, WASHINGTON**  
**CHAPTER 26**

David J. Gauthier  
16409—2nd Ave., SW,  
Seattle, Wash.

Gene Turner, designer of the T-40, happened to be in town, and presented a discussion on his airplane before a standing-room-only crowd.

Chapter 26 recently celebrated its 10th anniversary with a fly-in at Thun Field in Puyallup. Bill Johnson demonstrated the forming of aluminum by fabricating the root ribs of a Thorp T-18.

Ralph Pearson has completed and test flown his Volmer "Sportsman", as

has Ken White with his EAA "Bi-plane."

Cecil Hendricks has built a new right wing for the Story "Special", replacing the one destroyed by fire. He states that the Story doesn't have a "mean molecule" in it.

Carl Hanson has a "Cougar" under construction, and Peter Bowers is building up a two-place version of his "Fly Baby", to be named "Namu", apparently after the whale of that name.

• **SAN ANTONIO, TEXAS**  
**CHAPTER 35**

Michael A. Rodriguez  
715 Rexford Dr.  
San Antonio, Texas

The chapter's Pietenpol project has finally reached a point where it is now half completed . . . a great milestone along the way, and David Fretz has begun work on a Volmer "Sportsman."

Clint Lindsey has started building a Thorp T-18, and Chuck Schwertz has started on a 180 hp "Hustler", to replace the fine "Tailwind" that he re-

The book most widely used by homebuilders! **K. D. Wood's AIRCRAFT DESIGN**, 1966 edition. Revised every 3 years since 1934. Now widely used by most schools teaching the subject. Now available! \$12.00 post-paid, M.O. with order.

**JOHNSON PUBLISHING CO.**  
DEPT. SA, P. O. 990, BOULDER, COLORADO 80302

**EAA BIPLANE**

This rugged single-place biplane developed as an Association project.



EAA Biplane built by Larry Bishop, Stuttgart, Ark.

Span . . . . . 20 ft.  
Length . . . . . 17 ft.

Performance with a  
Continental C-85 engine  
Cruise . . . 110 mph +  
Top . . . . 125 mph +  
Ceiling 11,500 ft.

Spruce wings, steel tube  
fuselage, very detailed  
shop drawings, plus full  
size wing rib and jig  
drawing.

**\$15.00**

Write: **EAA, Hales Corners, Wisconsin**  
POST OFFICE BOX 229

**THE LIGHTPLANE**

HOW TO DESIGN AND BUILD IT

BY JOHN KAMM, EAA 7771

A practical treatise on the design and construction of lightplanes. Contains over 100 chapters, tables, graphs, specifications, notes, etc., that will help you build a better lightplane. Do you want to know the size of longeron, spars, cap strips, etc., for practically any size lightplane, monoplane or biplane, well, chapters 10-11 give it to you, in data form, for over 30 Lightplanes, old and new models. These two chapters are alone worth several times the cost of the manual. The author has had years of experience operating a lightplane factory, and has built dozens of different lightplanes, and has spent much time, money and research to make this the most sought for manual on the market today.

**Author's Personal Guarantee**  
Satisfaction guaranteed or  
money refunded. Illustrated  
& informative brochure free.

**Price \$4.00**

**KAM-CRAFT** P. O. BOX 1153  
MILWAUKEE 1, WIS.

**PAZMANY PL-1 ALL METAL-AEROBATIC**

378 sq. ft. of full size prints—List of raw materials—Sheet metal utilization diagrams—Construction specs.—5000 hrs of engineering. A well proven design.

**\$75.00 ppd.**

Three View—Speci-  
fications—Descrip-  
tion—Photos—  
One full size sam-  
ple drawing.

**\$2.00 ppd.**



**LIGHT AIRPLANE DESIGN** — 80 pages, 61 figures, 16 photos, 18 tables — A step by step guide for the amateur designer — No high mathematics. Every page is full of information. **\$4.00 ppd.**

**PAZMANY AIRCRAFT CORPORATION**

(1) Box 10051, San Diego, Calif. 92110



cently sold. Steve and Dorothy Wittman were recent visitors to the area, and guests of the chapter.

Larry Wang has taken on the task of building a Pitts "Special"; Dale McCreight has his "Playboy" one-quarter finished, while Herb Smith has his Sport-Aire flying.

Woody Holland, because of his visit to Vietnam, has stored his "Fly Baby" project and sold the engine. Both Lloyd Roberts and Ernie Perry have their "Fly Baby" projects half completed. Ernie Showed his off at a recent chapter meeting which he hosted.

Don Knowlton finished his Jodel D-9 and is thoroughly enjoying putting around in it, and Ted Eckhardt has a Turner T-40 under way.

Luke Nall has set aside his original design delta project while he is in service, and Sig Mathisen is at the halfway point on his original project.

#### • OGDEN, UTAH CHAPTER 58

Keith Powell  
846 La Verde St.  
Layton, Utah

In this organization, there is an automatic progression of officers . . . the vice-president automatically moves up to the president's job, and all other officers are newly elected.

The membership cooperated with Chapter 23 in Salt Lake City in holding a dance to raise funds for placement of Ron Conrad's triplane replica in the EAA Air Museum.

A panel discussion on aerobatics was moderated by John Weir, with Danny Bookout, Don Patterson and Justin Hopkins assisting. A fine talk on aircraft radios was presented by Dallas Coolbear, and films and discussions on soaring were also enjoyed by the members.

Eldon Lutz is showing good progress on his Cassutt "Special", and Bill Garner has flown the restrictions off his PJ-260 and should have it at Rockford this year.

Eldon Dewey has the wing ribs completed for his Stits "Flut-R-Bug", and Carl Hunter has the wing-fold fittings all made up for his "Cougar."

#### • DES PLAINES, ILLINOIS CHAPTER 89

Edward T. Pincombe, Jr.  
1717 Hermon Ave.  
Zion, Ill.

The chapter's "Fly Baby" group project will be sold, when completed, to the chapter member submitting the

highest bid. The project is coming along very well, with Al Ponterelli giving the wings and fittings for the ship.

Bob Otto gave an interesting talk and presented color films on the building of his Volmer "Sportsman" from the beginning of construction right on through the flight tests off land and water.

The respective projects being built by George Kohnke and Joe Hruby are well along, possibly covered at this time. Meanwhile, the members' completed aircraft are making the fly-in rounds this season, namely, Ed Pincombe's "Playboy", Curt Schuetz's "Miniplane", Richard Doyle's "Moon-Maid", and Wilton Weser's "Junior Ace."

#### • ORANGE COUNTY, CALIFORNIA CHAPTER 92

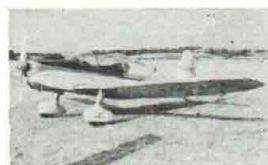
Gordon Bailey  
8241 Sterling Ave.  
Huntington Beach, Calif.

One of the "going-est" aircraft within the chapter is their Flying Club's Luscombe, which seldom is down long enough to be worked on. However, it recently had its engine and fuselage completely overhauled by the members, particularly Howard Denis, Earl Richey, Ben Summers, Bob Trew and Ron Smith.

Gordon Bailey demonstrated and lectured on gluing in warm and cold temperatures, a subject always of interest to aircraft builders.

Bob Trew not too long ago purchased a completed "Playboy" and took a short cut to flying fun . . . Harold Schmidt has a "Playboy" under construction. Bob, who owns a Luscombe, is also building a Marquart biplane. Marv Smith, also working on a Luscombe, has the fuselage and wings completed for an EAA "Bi-plane", while Bill Silzle completed his beautiful "Miniplane" and is logging time in it.

(Continued on next page)



Retractable undercarriage available. Plans now for sale: \$100—by C. Piel official rep.

E. LITTNER — 546 83rd Ave.  
Laval-Chomedey, Quebec, Canada (1)  
Send \$1 for Specs, Photos, 3-view drawing.

**SUPER-DIAMANT**  
C.P. 604—  
150 HP.  
**DIAMANT**  
C.P. 601,  
602, 603.

#### BUILD THE DOODLE BUG



Single - place  
sport plane —  
170 mph cruise  
—over 700 mi.  
range.

\$30.00 for plans

(1)

#### BUILD THE SIZZLER

Two-place, all-metal,  
160 mph cruise, over  
600 mile range.

\$50.00 for plans.

Send \$1.00 for specifications and pictures of both.

LARRY HEUBERGER  
609 Crestline Wichita, Kansas 67212



#### "STARFIRE" FOR SALE

Two-place, 140 mph cruise, 200 hr. since \$700 top overhaul, 200 hr. on airframe. Will deliver anywhere this side of Rockies.

JOHN FELLABAUM  
2338 TIMBERLAWN DRIVE  
TOLEDO, OHIO 43614

**BUILD & FLY  
BARNEY  
OLDFIELD'S  
BABY  
GREAT LAKES  
for less than  
\$750!**



**GREAT LAKES  
TRAINER**

125 to 185 hp  
two-place  
modernized (by original designer) and the Baby Great Lakes, 50 to 85 hp. Both are easy to build, fly and maintain plus offering outstanding aerobatic performance. Clearly the most wanted lightplane designs of all time. Info packs include photos, specs and three views. Baby packet \$2.00. Trainer packet \$2.00. Combined packets \$3.00. Write Dept. B.

\*Less engine and prop.

**GREAT LAKES**  
AIRCRAFT COMPANY  
P.O. BOX 804  
CLEVELAND, OHIO 44101

(1)

## NORCRAFT LTD.

AIRCRAFT HARDWARE & INSTRUMENTS

- WHAT ARE YOUR NEEDS?
- WE ARE INTERESTED!
- FOR CATALOG WRITE!

P. O. BOX 584 NORWALK, CALIF. 90650

ENCOURAGING PRICES — TRY US!

#### BUILD THE PLAYMATE

(1)

#### 3 Place, Folding Wing, Take-It-Home Sport Plane

Both wings fold or unfold in 30 seconds, no bolts or fairings to remove or wing support brackets required.

WRITE FOR FREE LITERATURE

**STITS AIRCRAFT**

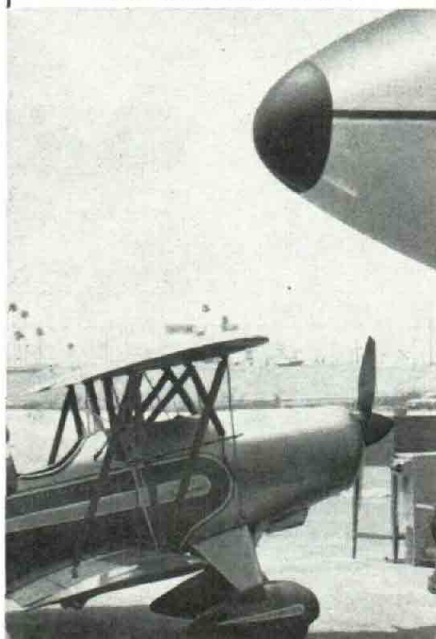
P. O. Box 3084-S

Riverside, Calif. 92509





## WHY DOESN'T SOMEBODY DO SOMETHING FOR THE LITTLE GUY?



## SOMEBODY HAS — SKYWAY RADIO!

Skyway Radio, Inc. has slashed prices of all self-contained aircraft radios 45% in a special factory-direct sales offer! Bypassing all dealers and distributors, Skyway is passing on the savings to you on the radios below — battery-powered units requiring no aircraft electrical system. The ideal radio for experimental aircraft!



### ●SR-5 RECEIVER .....\$79.95

Reduced from \$150, the SR-5 is a continuously-tunable receiver covering the entire 108-136 mc aviation band. Monitors VOR frequencies for weather broadcasts as well as communications frequencies.

### ●ST-10 TRANSMITTER .....\$139.95

Slashed from \$250, the ST-10 is equipped with antenna relay for use with the SR-5 receiver. Transmits on all 11 commonly used frequencies: 121.5, 121.7, 121.9, 122.1, 122.5, 122.6, 122.7, 122.8, 122.9, and 126.7 mcs.

### ●SX-1 TRANSCEIVER .....\$159.95

Reduced from \$295, this unit combines a tunable 108-136 mcs receiver with a single frequency transmitter — with your choice of frequency.

All Skyway radios are powered by long-life, mercury batteries . . . fit in standard 3 1/8 inch panel cutouts . . . are instantly removable for portable or emergency use . . . and are sold on a no-obligation basis with a 10-day money-back guarantee.

### RADIO ACCESSORIES

- Radio Antenna Kits
  - SA-1—100-inch cable .....\$4.95
  - SA-1L—200-inch cable ....\$6.95
- Radio Mounting Brackets & Hardware (Fits all three radios) .....\$5.95
- RM-12 Radio Batteries ...\$1.00 ea. (6 needed for SR-5, 10 for ST-10, SX-1)

**SKYWAY**

Skyway Radio,  
Inc.

Greater  
Wilmington  
Airport

P. O. Box 32, Dept. D9  
NEW CASTLE, DELAWARE

## CHATTING . . .

(Continued from preceding page)

Dick Corcoran now has his Fairchild PT-19 flying with a 200 hp Ranger in it; John Quayle is showing fair progress on his "Tailwind", as is Jack Denis and John Truman on their respective "Skycoupe" and Thorp T-18 projects.

Bob Tremblay is skinning the hull on his Volmer "Sportsman", but we have no word on how Vernon Cary is doing on his. Bobby DeRossett displayed a model of his proposed original design amphibian at a recent meeting.

Howard Denis is building an original design aircraft engine to go into the geodetic aircraft that he has on the drawing board. Earl Richey is moving along on his geodetic job which will be powered by a 125 hp Lycoming GPU. Ed Evans has his own-design craft in the building process, and Chet Page is working on an original design all-metal low-wing.

Doug Doe is doing good work on his "Emeraude", as is George Hylke-ma on his "Fly Baby."

### ●CLAYTON FOLKERTS (Rudd, Iowa) CHAPTER 94

Robert Birkholz  
1442—4th St., SE.  
Mason City, Iowa

This recently incorporated chapter has its own fly-in forthcoming, as well as participating in the large Mason City Aviation Days. The members were treated to a special "open house" of the new terminal building.

A wing spar deflection test was demonstrated by Lee Harthan, pointing up the results of improper placement of wing fittings to spars and improper reinforcements in critical areas. Lee has completed and been flying his long-winged "Petroholic", and is now working on another original design.

Bob Rofshus is rebuilding a Heath which his father built in the late 20s, and hopes to have it ready to take to the air soon.

Paul Hanson is working on a Jodel D-11, and the group project Pietenpol is showing steady progress.

### ●LAWRENCEVILLE, ILLINOIS

CHAPTER 114  
Herschel Lemeran  
Box 42  
Birds, Ill.

Herschel Lemeran has completed and is flying his Cassutt 3 . . . it shows the same beautiful workmanship as does his "Tailwind" which he also flies. Milton Harding and Dean Gray are welding up the fuselage for their Cassutt.

Bob McGregor has the fuselage welded and is converting a Volkswagen engine for his original design biplane, and Carter Quisenberry and Howard Hawkins have the fuselage completed for their modified "Miniplane."

Bud Brown regularly takes his Cherokee II sailplane up, and Dick Dunseth and Bill Kessler are rebuilding a Piper PA-16.

### ●SANTA CRUZ, CALIFORNIA CHAPTER 119

A. O. Tshirner  
320 Broadway  
Santa Cruz, Calif.

The Pietenpol chapter project is now about 75 percent complete. The fuselage, wing and tail group are completed, and Don Hoffman and Tom Hurley recently set it on its gear.

Ralph Cox showed some films of his finished "Miniplane" which is really beautiful and has a good number of awards to its credit. "Scotty" Scott is making up parts for his EAA "Bi-plane."

John Busse is rebuilding his Luscombe, while Les Marino is restoring an Interstate.



85 hp top speed .....210 mph  
125 hp Super Mustang top speed .240 mph  
Stall speed 60 mph—Take-off dist. 450 ft.  
Ten page illustrated brochure .....\$ 2.00  
Detailed drawings with illustrated manual, full size layouts .....\$ 75.00  
Airframe material kit .....\$550.00  
(More now included)

### Build the Famous MIDGET MUSTANG (I)

Build from the ORIGINAL DAVE LONG drawings. This PROVEN, high performance, fully aerobatic (9G) sport plane, employing modern simplified construction techniques, is the least expensive and EASIEST to build design available to the homebuilder. No complicated fittings or machine work required. All materials readily available.

Watch for 2-Seater Version Available Soon

Individual material items available.

BUSHBY AIRCRAFT  
848 Westwood Dr. Glenwood, Ill. 60425

## EXHAUST STACKS — EXHAUST STACKS

AERONCA  
7AC, 11AC  
Adaptable to All  
Homebuilts Using  
Continental  
65 hp through 85 hp.  
\$29.00 Set



LUSCOMBE  
8A through 8F  
For Homebuilts with  
low profile cowling  
using up to 100 hp  
Continental  
Cont. engines.  
\$39.00 Set

### SPECIAL!

### 108 hp through 160 hp Lycoming Stacks!

Especially designed to fit homebuilts using the above engines, similar in appearance to Luscombe stacks shown above.

\$52.00 Set — Includes exhaust gaskets

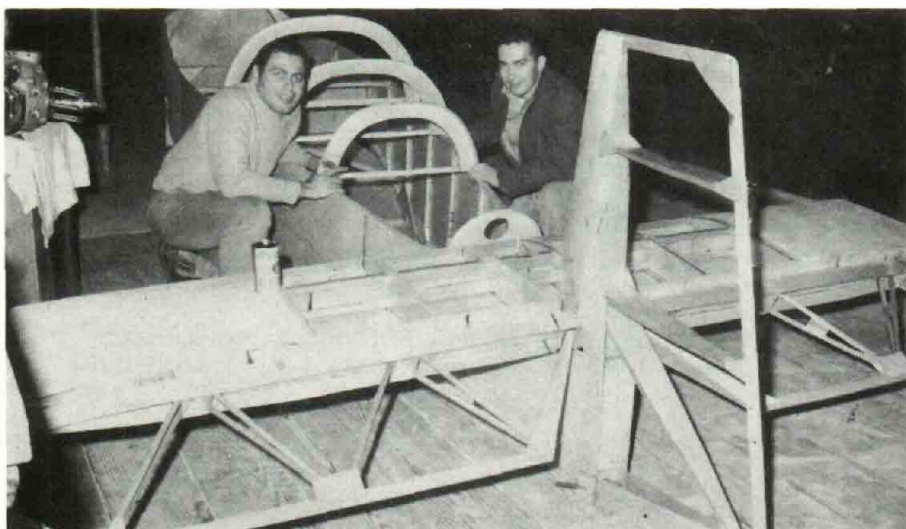
Exhaust systems available for Ercoupe,  
Piper J3, Taylorcraft  
65 Lycoming Powered Ships.  
Send for free catalog. When ordering,  
send check or money order,  
plus sufficient postage.

**WAG-AERO**



POSTOFFICE BOX 181  
LYONS, WISCONSIN





Robert Palumbo and John Morlock of Mohawk Valley (Albany, N.Y.) Chapter 146 line up a former on the fuselage of their Jodel F-11.

Randy Peterson is starting on a "Headwind", Ralph Henneman resumes work on his Cherokee sailplane, and Bill Williams is making good progress on his "Skyhopper."

● **MOHAWK VALLEY (Albany, New York) CHAPTER 146**  
Joseph Ferraro  
296 Wolf Rd.  
Latham, N.Y.

Jeff Shinn headed a discussion on the selection of aluminum alloys and their heat treatment for aircraft use, and the Eutectic Co. sent one of their

representatives to demonstrate the company's products to the members.

Joe Ferraro and Reese Mitchell joined forces to explain weight and balance to the group.

Red Rutkiewicz has flown the restrictions off his "Skyhopper", and Don Haerry has covered his "Tailwind" and should have it completed soon.

Reese Mitchell is showing good progress on his Jodel D-11, and Francis Reed has a similar project under way. John Morlock and Robert Palumbo have the fuselage of their Jo-

del F-11 complete and are assembling the wing.

Doug Brown is well along on his Pazmany, having the fuselage finished. Jeff Shinn and Don Leadley both have the formed parts and wing ribs finished for their respective Thorp T-18s, and are now assembling these parts.

Ray Wielt has his Pitts "Special" in the covering processes, and brother Royal Wielt is probably flying his Smith "Miniplane" by this time.

Jim Powledge demonstrated the rib-stitching technique which he used so successfully on his EAA "Biplane" project. . . both Ron Rios and Matthew Fritz are building separate "Biplanes."

Ed Snyder is making very good progress on his "Sportsman", and word leaks out that Owen Billman is doing likewise on his original design three-place amphibian. Elmer Grinnel is currently rebuilding an Aeronca "Defender."

● **CHATTANOOGA, TENNESSEE CHAPTER 150**

J. L. Dickerson  
1420 August Dr.  
Hixson, Tenn.

The members took part in a very good and well enjoyed chapter cook-out and impromptu flight events, all at very low cost. They also received a lecture and demonstration of welding by Karl Stage.

The Thomas W. Bond airplane, which is actually a modified Georgias "Special", is fast nearing the covering stage under the guidance of Larry Champion and John Wright.

(Continued on next page)

**B & F AIRCRAFT SUPPLY**

World's Largest Stock of Aircraft Materials for Building or Rebuilding of Experimental, Amateur-Built, Antiques, and Standard Category Aircraft. Hard to Find Items — Easy Ones, Too. Schools, Universities, Airport Shops and Homebuilders Inquiries Invited. Domestic or Export.

We Are Direct Mill Agents for Seamless 4130 Chrome-Moly Tubing and Sell for Less than Your Local Warehouse. One Foot or 10,000, Round, Square, Streamline.

**DISTRIBUTORS AND DEALERS FOR THE FOLLOWING NAME BRAND MATERIALS:**

Van Pelt Corp. Tubing  
Sawhill Tubular Products  
Summerill Tubing  
Tube Distributors, Inc.  
Razorback Fabrics, Inc.  
Flightex Fabrics  
Ulster Linen Co.  
The Glidden Co. (Dopes)  
Macwhyte Cables  
Flottorp Propellers  
U.S. Plywood (Weldwood Glues)  
Wisco Batteries

Champion Spark Plugs  
Turco Products —  
(Paint Strippers, Etch,  
Cleaners, etc.)  
Cooper Industries  
Acme-Newport Sheet (4130)  
Schenuit Tires & Tubes  
Thor Power Tools  
Aero Supply & Equip. (Plywood)  
Maule Products (Tail Wheels, etc.)  
Behr-Manning

Stock items include: Sitka Spruce, Plywood, Glue, Nails, Aluminum Sheet and Tubing, Trailing Edge, "Hot" Section Aluminum Stringers, Bolts and Hardware, Cables, Pulleys, Streamline Wires, Slip Covers, Fabric, Dopes and Thinners, Engines, Propellers, Accessories, Tires and Tubes, Wheels and Brakes, Plexiglas, Fuel Tank Hardware, Complete Line of Instruments, Hand Tools—Sheet Metal Tools, Welding Kits, Spraying Kits, Riveting Tools, etc.

We can help you with your building or rebuilding problems.

**ONE SOURCE SUPPLY — FAST SERVICE — LOWEST PRICES**



**B & F AIRCRAFT SUPPLY**

"Since 1937"

6141 W. 95th OAK LAWN, ILL. 60453  
On Routes 12 & 20  
EAA Members 396 and 397

Phone 422-3220  
Area Code 312-422-3221



**STARDUSTER TOO**

(IT WAS WORTH WAITING FOR)

"Finally!" "About Time!" "At Long Last!"  
"Man, What a Machine!"

**EXCELLENT CONSTRUCTION DRAWINGS**

**\$50.00**

- \* Full Two-Place
- \* Solo Rear Cockpit
- \* Dual Controls
- \* Top Speed Over 150 mph
- \* Climb Over 2000 fpm
- \* Stall Under 50 mph
- \* 180 hp Lycoming Powered
- \* Acceptable Horsepower 125-260
- \* Simplified Construction
- \* All Materials Readily Available
- \* PRINTED Construction Drawings (NO BLUEPRINTS)
- \* All fittings and ribs FULL SIZE (1)
- \* Span 24' — Large enough to do the job.
- \* (Yes, the single-place STARDUSTER prints are still available at \$25.00).

**LOU STOLP**

P. O. Box 461  
Corona, Calif. 91720



### THE SPORT OF SOARING

offers a flying challenge, fun, achievement awards and competition. ATC'd and experimental sailplane kits available commercially. Send for free list. Join SSA and qualify to subscribe to monthly Soaring magazine. Associate dues, \$3.00 per year; Member, \$10.00; Soaring, \$3.00 extra, if desired.

1964 Directory of All Sailplane Models in the U.S. — 50c  
THE SOARING SOCIETY OF AMERICA, INC.  
Box 66071-X Los Angeles, Calif.

### PROPELLERS

CUSTOM MODIFIED METAL for Experimental and Racing Aircraft. Hundreds of propellers and thousands of hours use have proved our raked and thinned designs to be the finest available anywhere. Ask the man who owns one.

NEW — OUR PEARLIZED FINISHED BLADES — CUSTOM PLATED. Will complement the finest executive or homebuilt aircraft. Description? BEAUTIFUL! Write for prices. Your inquiries are WELCOME.

PROPELLER OVERHAUL AND REPAIR Service for all single and twin engine aircraft. Beech — Cessna — Mooney — Piper — Aero Commander — DC3, etc.

AUTHORIZED SALES AND SERVICE  
Hartzell — McCauley — Flottorp — Hamilton Std. — Sensenich — Univair Aeromatic. Blades straightened. Governors overhauled or exchanged.

FAA APP. REPAIR STATION NO. 3727  
ANDERSON PROPELLER CO. INC.  
DuPage County Airport, Box 542  
West Chicago, Ill. Tel. JU 4-8787

### WEST COAST AIR SERVICE

10505 E. Alondra Blvd.

Bellflower, Calif. 90706

#### STREAMLINE TUBING —

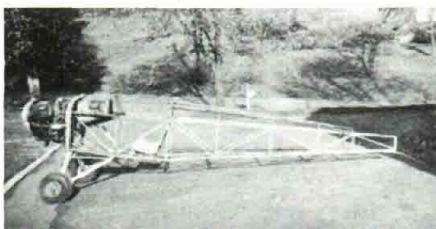
1 3/4"x3/4"x0.49x5'	Ea.	\$ 4.00
Gas Tank Caps & Necks	Ea.	3.00
Weldable Flange for above	Ea.	2.40
Weldable Tank Bosses	Ea.	.70 up
Cap Strip	Per ft. & up	.04
Goodyear Master Cylinders		
No. 511738	Ea.	12.00
T-18 Gas Tanks, Thorp Design	Ea.	79.50

#### ENGINES:

Lycmings 0-290G	Ea.	250.00 up
Generators, 25 amp. for Cont.		
85 hp and up	Ea.	25.00
Cylinders, 0-290G, complete w/valves, o/hs, cast covers, pistons, pins and rings, run-in-time only		110.00
Shinn Wheels and Mech.		
Brakes—600x6	Ea.	85.00
Shinn Hyd. Brakes—600x6	Ea.	30.00
Goodyear Brake Discs—		
No. 9530286	Ea.	12.95
Navigation Lites (Teardrop)	Pr.	4.00
Quik Drains—1/4 pipe	Ea.	1.50
Airquip Hose Fittings—		
No. 5 and 6	Ea.	.75
PT-22 Windshields—		
w/new frame	Ea.	7.50
w/glass	Ea.	12.95
Starduster Lam. Wing Bows (set)	Ea.	25.00
Exhaust Temp. Gauge w/thermo-couple and leads	Ea.	29.95

Instruments, Plywood, Cables, Hardware, Turnbuckles, etc.

All Prices FOB — No CODs  
Postage with Order Please



A long-ago started Georgias "Special" is being worked on again by Larry Champion and John Wright of Chattanooga, Tenn. Chapter 150. Originally started by the late Thomas W. Bond, the airplane will bear his name.

### CHATTING . . .

(Continued from preceding page)

There are three "Gyro-Copters" being built in the area . . . one each by Robert Vincent, Lloyd Harris and John Davis.

### CHARLEVOIX, MICHIGAN CHAPTER 192

Robert D. Schrier  
R. 1, Box 132  
Brutus, Mich.

A very interesting and fascinating demonstration of model rocketry was presented to the members by Leslie W. Hamann.

Ervin Nowak is making slow progress on his "Baby Great Lakes", but enough to allow the members to inspect the work. Bob Winchester has the wings for his Pitts "Special" completed now and is moving on to other components.

Floyd McCracken is designing a ducted-fan craft which will utilize a Corvair engine, and has already made some of the dies for it.

### TARHEEL (Eastern North Carolina) CHAPTER 197

Jack Lowers  
R. 3, Box 22-B  
Clinton, N.C.

As a gesture to the members' wives, the chapter planned a steak supper just for them. At an earlier meeting, Ray Kelly of the FAA presented a fine talk on the homebuilding of aircraft.

The chapter's Piper J5 "Cub Cruiser" project is now covered and painted, and probably logging a lot of time at the hands of the members.

Two other ships in the chapter have recently been completed and have taken to the air. One is the "Cougar" built by Ted Tingle, and the other is the Stits "Skycoupe" built by Billy Talton and George Brannan.

Keith Hill and Ervin Carroll are covering their Mong "Sport", and Calbie Wood is well along on his Thorp T-18, after turning out a fine original design biplane.

Jack Lowers is well along on his Cassutt racer, and re-covered his original design biplane with plans to enter the various biplane races.

### CAPE BRETON, NOVA SCOTIA, CANADA CHAPTER 201

Edward McNeill  
30 Harold St.  
Sydney, Nova Scotia, Canada

Joe Layes has the tail and ribs completed for his Jodel D-9, and Ray Mossman is assembling the fuselage of his Bowers "Fly Baby."

Jack Baptiste is building wing ribs for his "Starduster" and, at the same time, restoring a Fairchild PT-19, while Ed McNeill has the hull for his Volmer "Sportsman" in the jig and assembling the fuselage.

Donnie MacDermid is almost finished with his "Flut-R-Bug", with hopes to bring it to Rockford, and is also rebuilding a Piper J3 "Cub."

### GODERICH, ONTARIO, CANADA CHAPTER 205

Lloyd C. Atfield  
153 Widder St.  
Goderich, Ontario, Canada

A recent guest, Harold Brown, who is building a Thorp T-18, spoke on the government's supervision of various flying activities.

Color films on various subjects, from the library of Bob Smith, were enjoyed by the members, and Eric Ostland reported on tests carried out on Terryline cloth, which is the Canadian trade name and equivalent of Dacron.

Eric Ostland is just about done on his Jodel D-11; the wing and fuselage are complete, and just the finishing touches going into it. Don Ross is building the tail unit for his Jodel D-11, and fabricating whatever other parts come easily.

Ray Gowdy is working away faster on his "Fly Baby" than is Jack Brooks. Jim Armstrong is doing good on his Pietenpol, and Allan Ball is rebuilding a badly damaged Cessna 180.

Ed Harnden is finished with the welding on his "Little Toot" and is building the wing attach fittings. Guy LaRocque and Lloyd Atfield have the forward tubing section of their "Little Toot" fuselage complete, and also working on the fuselage of their Great Lakes replica.

Bill MacDonald is back to work on his Smith "Miniplane", and Ron Riley is making up the many fittings for his EAA "Biplane."

### MOLDED FIBERGLASS

#### Smith Miniplane

Nose Cowl	\$30.00
Wheel Pants (800x4 or 600x6)	pr. 35.00
Bucket Seat	30.00
Head Rest	8.50
Aileron Crank Covers	pr. 7.50

#### Thorp T-18

Wing Tips	pr. 35.00
Nose Cowl, for Lyc 125 thru 180	35.00
Wheel Pants, 500x5 (Cessna 150 type)	pr. 35.00

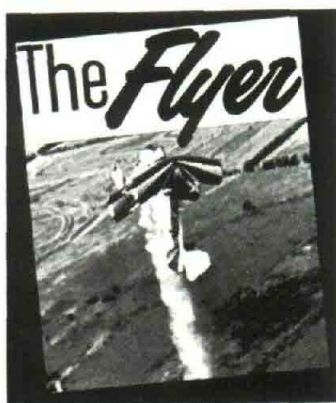
Many of above parts will fit other types of homebuilts.

WRITE FOR INFORMATION

L. B. HAMLYN

BOX 109

RESEDA, CALIF.



## WHAT? A Monthly magazine for FUN Aviation?

Rockets, missiles or airlines poop? Nope! Just fresh news and sparkling pictures. Homebuilts, airport of the month, antiques, coming events, air shows, fly-ins, cartoons, photo spreads, x-country directory, new products, book reviews, informative ads and lots more for the general aviation pilot.

Our 6th year of publication.

## THE FLYER

send \$3.00 cash,  
check or money order  
for 12 big issues

120 So. State St.  
Westerville, Ohio

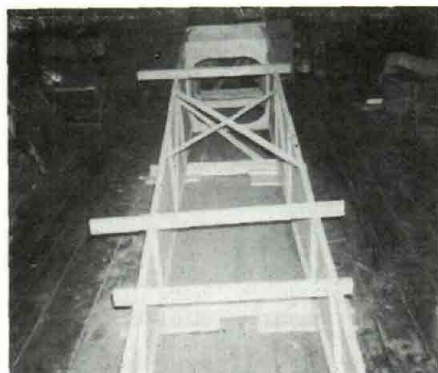




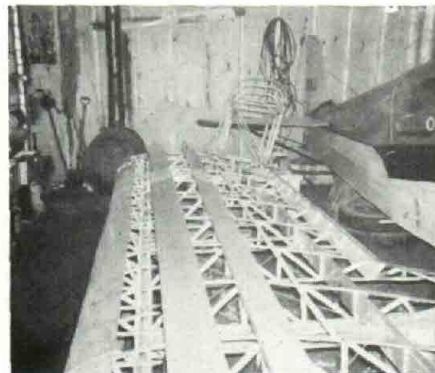
1.



2.



3.



4.

The eastern end of the North American continent is well represented by Cape Breton, Nova Scotia, Canada Chapter 201: (1) Jack Baptiste, who is also restoring a PT-19, assembles ribs for his "Starduster"; (2) Ed McNeill's Volmer hull is in the jig and coming together nicely; (3) Ray Mossman's "Fly Baby" fuselage is shown in assembly; and (4), the wing of the Piper J-3 being rebuilt by Donnie MacDermid, who also has a Stits "Flut-R-Bug" completed.

## ● SPRINGFIELD, MISSOURI CHAPTER 218

William Hansen  
1526 N. Missouri Ave.  
Springfield, Mo.

Slides and films of the XB-70 and the Southwest Regional Fly-In were viewed at recent meetings, as were films on radio-controlled models presented by Clyde Chrisman.

Charles Christopher of the Eutectic Welding Alloys Corp. demonstrated the latest in welding techniques.

Val Banes explained and displayed the preliminary drawings on a ship he has been designing, which is based on simplicity, speed of construction, low cost and Volkswagen power.

The Pietenpol Club is busily working on its project. Van Flynn is building an EAA "Biplane", and Dr. Reid has one of his Volmer projects up for sale.

## ● STOCKHOLM, SWEDEN CHAPTER 222

Hugo Ericson  
P. O. Box 78  
Tandsbyn, Sweden

Students from the aeronautical classes from Norrköping Technical College were special guests at a re-

(Continued on next page)

**Practical Lightplane Design & Construction for the Amateur**—New 1965 edition now available. Written by an amateur builder of six airplanes since 1929 and a pilot of over 14,000 hours air time. Contains proven plans. 50 pages (8½x11) \$4.75 ppd. Brochure and black and white photo 25c.

W. J. FIKE, Dept. E, Box 683  
Anchorage, Alaska 99501

Now a homebuilt has been designed for you who want to fly for pure fun. The Bede "Super Demoiselle" is so inexpensive and easy to build that everyone can now own one. Really enjoy the "open-air" flying thrill only possible with this type of aircraft. You will want to build one even if you already have a plane.



### MAIN FEATURES:

**Fuselage** is made of square aluminum tubing completely bolted together. No welding, jigs, or special equipment required; only simple hand tools.

**Wings** have an aluminum tube spar, to which are connected fiberglass rib panels that inter-connect to make up a complete wing, so simple a wing can be fabricated in one evening. The wings are removable for towing.

**Tail assembly** is of metal honeycomb panels for maximum strength; but, again simple construction.

**Engine** recommended is a 65 hp Continental, but a VW to 90 hp can be used.

**Performance:** Stall speed—42 mph; cruise, open cabin—75 mph, closed cabin—110 mph; R/C is 1,100 feet per minute; take-off and land in less than 200 feet.

**Cost** is very low. Materials less engine and accessories is approximately \$700.

**Time to build** can be short. An average homebuilder can construct one in just a couple of months spare time.



Order now complete information kit that includes three-view, photographs, sample materials, etc., for \$8; or complete plans which include everything needed, even full-size templates, price—\$65, or \$50 for EAA members. Write:

## BEDE HOMEBUILTS

CUYAHOGA COUNTY AIRPORT  
355 RICHMOND RD. CLEVELAND, OHIO 44124

NOTE: Plans are being made for an "Assembly Hangar" equipped with all necessary tools and materials so that a homebuilder working full time can build his own "Super Demoiselle" in one week's time. For more information on this, write to the above address. (4)



NEW WING GIVES

# IMPROVED

## TAILWIND PERFORMANCE

It's true! S. J. Wittman's larger new wing (by 19 inches), with modified airfoil actually makes an outstanding airplane even more spectacular! New 22½ ft. wing lowers landing and take-off speed, improves rate of climb, gives higher ceilings and boosts cruise speed at altitude. New wing fits existing Tailwinds. All Tailwind plans now include latest wing drawings.

PLANS \$125.00

(1)

WRITE:

**S. J. WITTMAN**

P.O. Box 276, County Airport  
OSHKOSH, WISCONSIN



## SPRUCE PLYWOOD SPRUCE

### FINEST SPRUCE IN THE WORLD

#### Complete Kits for Homebuilts

EAA Biplane Model "P"	\$105.10
Miniplane	70.25
Fly Baby	191.00
Pitts Special	76.25
Tailwind (new wing)	85.75
Volmer (Sportsman (less wings))	125.00

Complete Kits include stringer and rib stock, finished wing and aileron spars. You bevel, taper and drill to insure proper fit.

#### Spar Kits for Homebuilts

EAA Biplane—Model "P"	\$ 82.25
Miniplane	46.00
Starduster	48.50
Starduster Too	108.00
Cougar	51.40
Little Toot	81.00
Stits Playboy —	
(Single-Place SA3A)	38.50
(Two-Place SA3B)	70.00
Stits Skycoupe	55.00
Pitts Special	54.50
Tailwind (new wing)	44.00
Knight Twister	54.70

Spar Kits include wing, center section and aileron spars milled to net measurements.

Prices F.O.B. Hoquiam, Wash.

Delivery 30-60 days after receipt of order.

#### Certified Aircraft Plywood

4' x 8' Sheets to Spec. MIL-P-6070  
10% Discount on 3-5 Sheets.  
15% Discount on 6 Sheets or More.

#### MAHOAGANY

Thickness	90°	45°
1/16"	.65 SF	1.04 SF
3/32"	.73 SF	1.16 SF
1/8"	.76 SF	1.23 SF
3/16"	.87 SF	1.34 SF
1/4"	1.24 SF	1.70 SF

#### BIRCH

Thickness	90°	45°
1/16"	.88 SF	None
3/32"	.90 SF	1.44 SF
1/8"	.95 SF	1.50 SF
3/16"	1.08 SF	1.78 SF
1/4"	1.40 SF	2.15 SF

Add 25% for less than full sheet.

CAPSTRIP — 1/4 x 1/4	.05 ft.
500 ft. and over	.04 ft.

GLUE—Weldwood Plastic Resin  
(Water Resistant)—1 lb. can \$1.25

Weldwood Resorcinol (Waterproof)  
1 pt. can \$3.45  
Qt. can \$5.45

AIRCRAFT NAILS — 20 Gauge,  
flat, bonderized and cement coated.

Size	Steel	Brass
1/4"	2.75 lb.	3.95 lb.
3/8"	2.60 lb.	3.75 lb.
1/2"	2.40 lb.	3.50 lb.
5/8"	2.25 lb.	3.25 lb.
3/4"	1.95 lb.	2.95 lb.
1"	1.75 lb.	2.75 lb.
18 ga.—5/8" & 7/8"		2.95 lb.

Add 75c for prepaid postage on 1-5 lbs.  
nails or glue. Overpayment refunded.

An illustrated folder of exceptional values in building materials, recovering supplies, instruments and accessories is yours for 50c applicable to first purchase. Order one today.

No Crating or Handling Charges

**AIRCRAFT SPRUCE CO.**  
BOX 424 FULLERTON, CALIF.

## CHATTING . . .

(Continued from preceding page)

cent meeting, and EAA President Paul Poberezny and Treasurer Art Kilps visited the chapter on a recent European trip.

The members toured the Aeronautical Research Laboratory, the Swedish equivalent of our NASA, viewed the wind tunnel and various interesting films.

A group charter flight to Rockford is under consideration, otherwise work on the new amateur-built regulations is progressing slowly.

### ● WABASH, INDIANA CHAPTER 235

Ivan E. McDonald  
Box 385  
Wabash, Indiana

A relatively successful fly-in was undertaken by the chapter, with about 125 aircraft attending. Sky diving, aerobatic and gyro-copter demonstrations were all part of the program.

During the recent winter, the chapter had displayed Harold Mahaney's Mong "Sport" at a local hobby show. The fuselage and top wing are complete, but Harold had to store the project before going overseas.

Dick Brunermer discussed his Pazmany "Laminar" project as well as the heat treating of various parts.

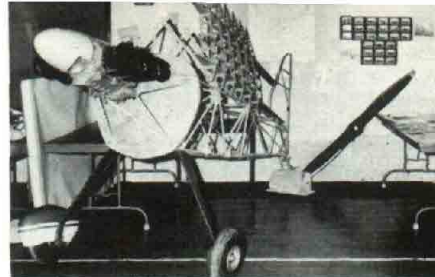
### ● APPLETON-GREEN BAY, WISCONSIN CHAPTER 252

Richard J. Borremans  
1824 Eugene St.  
Appleton, Wis.

A new chapter to cover a very important area was organized by Richard Borremans, who now serves as president. Donald Perry is the vice-president and Donald Houchin is secretary-treasurer.

This new group has its own flying club and recently purchased an Aeromca "Chief" and majored the engine. Discussion is being held on building a clubhouse for the group, while films of the 1965 Fly-In were viewed and Arden Hjelle gave a fine talk on building and flying his Wittman "Tailwind."

Dick Borremans exhibited the landing gear of his "Emeraude" project at a recent meeting . . . Don Perry is working on his second aircraft after



Chapter 235's display at a hobby show in Wabash, Ind. included the fuselage and part of a wing panel of Harold Mahaney's Mong "Sport."

having completed an excellent little Jodel D-9.

Anthony Pastersky hosted a meeting where members could view the progress on his "Baby Ace" and the Volkswagen engine he is converting for it. John Dowd is nearing completion of his "Tailwind."

### ● BREVARD COUNTY, FLORIDA CHAPTER 264

D. C. Skinner  
1445 Belford Court, N.  
Merritt Island, Fla.

And another new chapter is added to the EAA roster, this one embracing the area from Titusville down to Melbourne, including the Cape Kennedy complex. The president is Don Skinner, vice-president is Charles Lamb, secretary is Leonard Johnson and treasurer is Don Williams. Leonard Johnson was the organizer, and Lee Arnold of Chapter 23 in Salt Lake City was highly instrumental in helping to get the chapter off to a good start.

Charles Lamb has a Smith "Miniplane" virtually completed, and Don Skinner is building a Pitts "Special."

Don Williams is working on a Thorp T-18, while Dave Newhouse is currently designing an all-metal craft. Additionally, Dave flies a Monocoupe and also has an EAA "Biplane" on the gear . . . Frank Groves is also building an EAA "Biplane."

A. Frank Prichard has a single-place "Playboy" in the works and Vernon Goff is making steady progress on his "Emeraude." Bob Weeks has finished his rotor-craft, and Lee Arnold's four-place project is back home in Utah. ▲



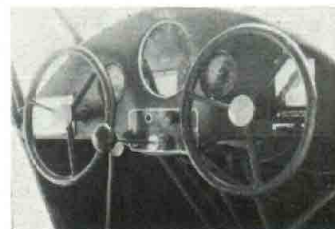
#### FOR SALE:

Side-by-Side

TAYLOR-  
YOUNG, 1938

Price \$1,495

Original instruments (3). No alterations; entire craft original. Re-covered '63; entire metal work re-chromated. Armored prop. 200 hrs. on excellent Continental 40A. This ship is as "new" and original as you could find. See pg. 21, 22, August SPORT AVIATION (might even be the same ship!). Relicensed, repainted this month. NACA 23012 Airfoil. Clean. No outside cables, horns, pulleys, steps. A remarkable aircraft for its time; cruise, 72; land, 32.



OLIVER W. GREENE,

WEST KINGSTON, R. I. — 401-783-2350